

# ALLCRAFT PROJECTS

Commercial Fit-outs • Maintenance • Quality Cabinetmakers



Build Reg: BC100699    Painters Reg: PP7701



# Core Services

“Reliability Integrity Diligence ”

## Introduction

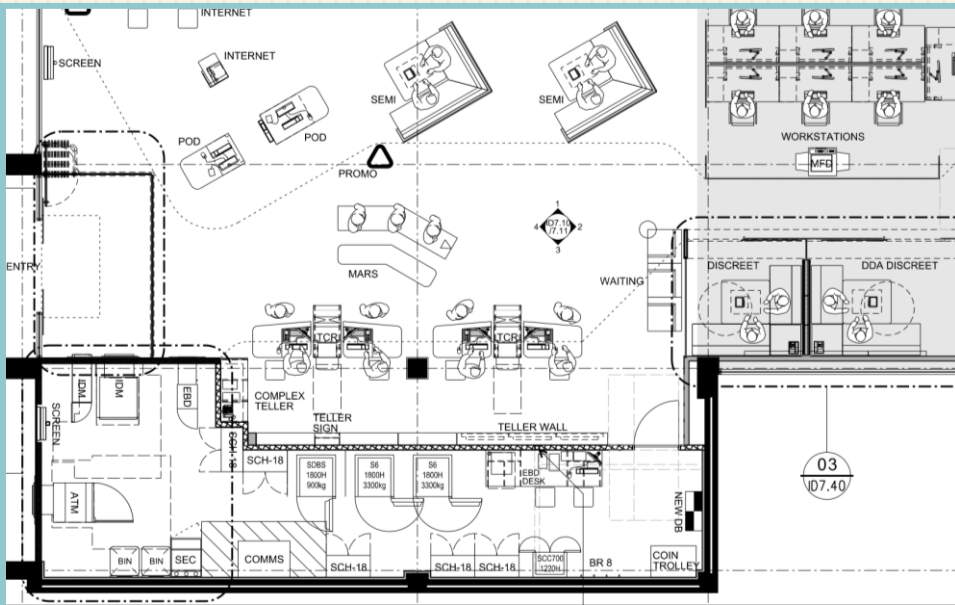
Allcraft Projects began trading in 1992, since then we have been completing tasks and providing a comprehensive array of services across all trades for various National Corporations located right over and throughout metropolitan, rural and regional WA for over 30 years.

*Specialising in Commercial Maintenance, Internal Fit-outs, External building Maintenance & Alterations along with Project Management at multiple sites.*



## Our Core Services

All General Maintenance, reactive and preventative  
Cabinets Joinery and complete fit outs  
Automatic doors, sliding and swing  
Egress and access control  
Plumbing & Electrical inc Fixtures Fittings & Roof leaks  
Air Conditioning and mechanical  
Signage & vinyl graphics  
Carpets & all flooring requirements  
Horticultural & grounds  
Gyproc partitioning & ceiling works  
General & Restorative Painting  
Audio Visual works  
Security works  
Tenancy defit and make good to lease requirements  
Project Design, construct, demolition & management



Complete fit out design and construct service



“There are no problems only solutions”



# About us

## Where we are.

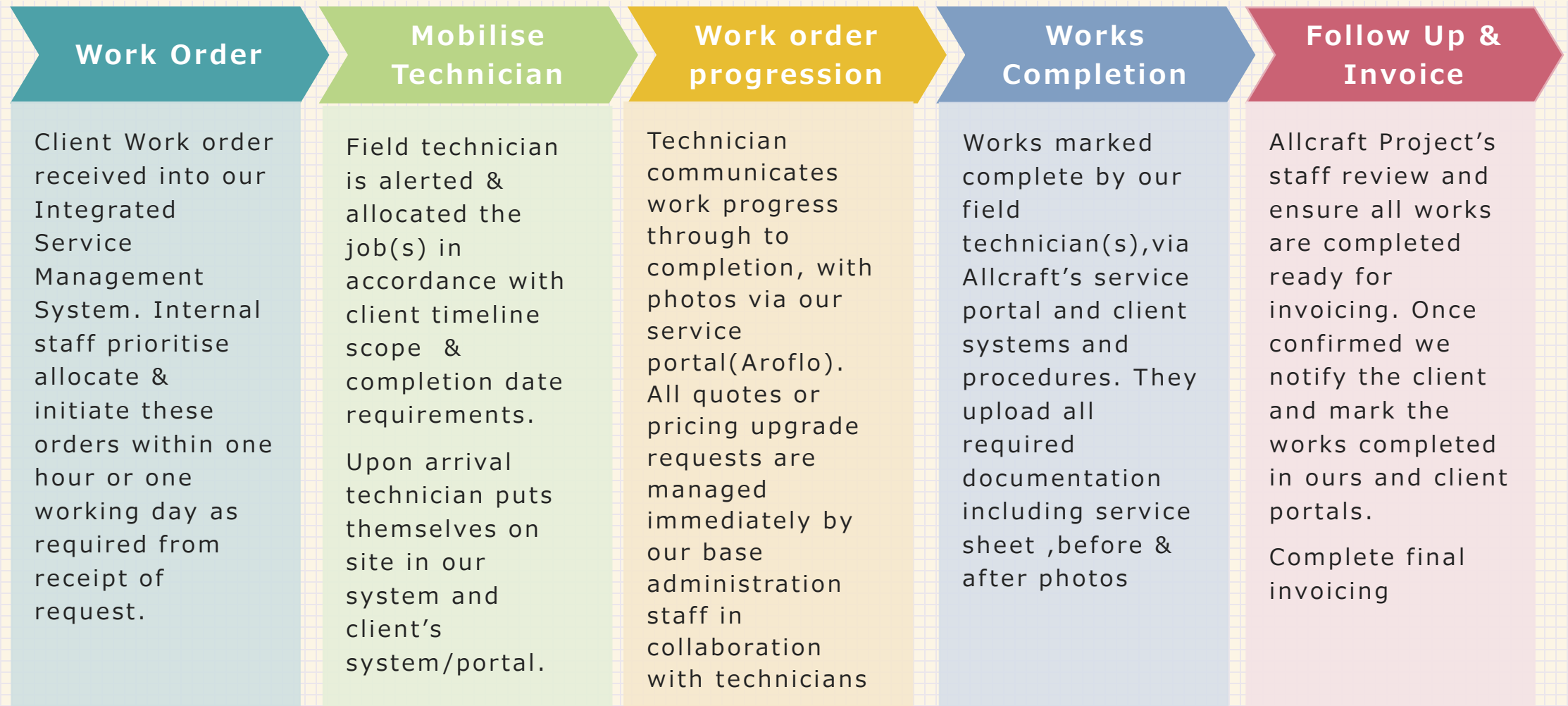
Finding efficient and effective solutions to meet all the needs across all our client portfolios is our priority. So, we recently built our own office and workshop with the latest technology. This is conveniently located in the new industrial estate at Northlink Gwangara. It presents our staff with a productive environment enabling team collaboration to complete any task, small or large.

Our staff is a diverse group all with trade exposure and experience who endeavour to stay up to date with modern technology and advancements in the building and construction world. We work with a comprehensive package of the latest software systems in service management, project management and business and financial systems

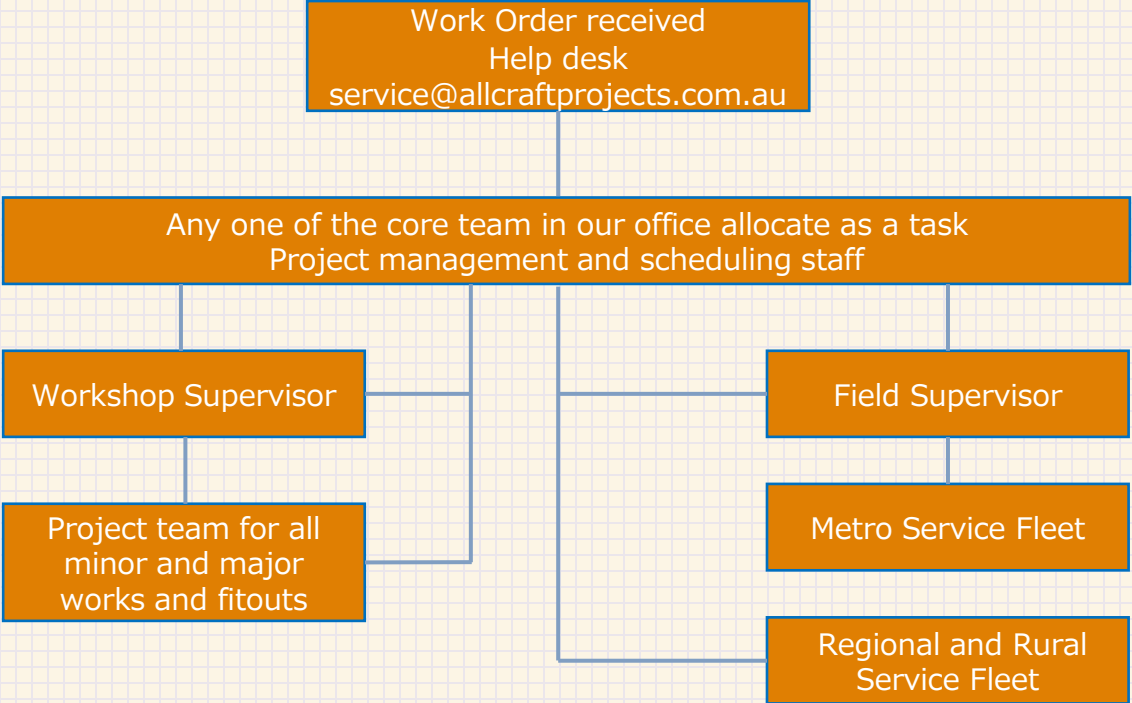


Allcraft Projects in house joinery shop

# Workflow start to finish (Account Structure & Scheduling)



# Allcraft Projects Workflow

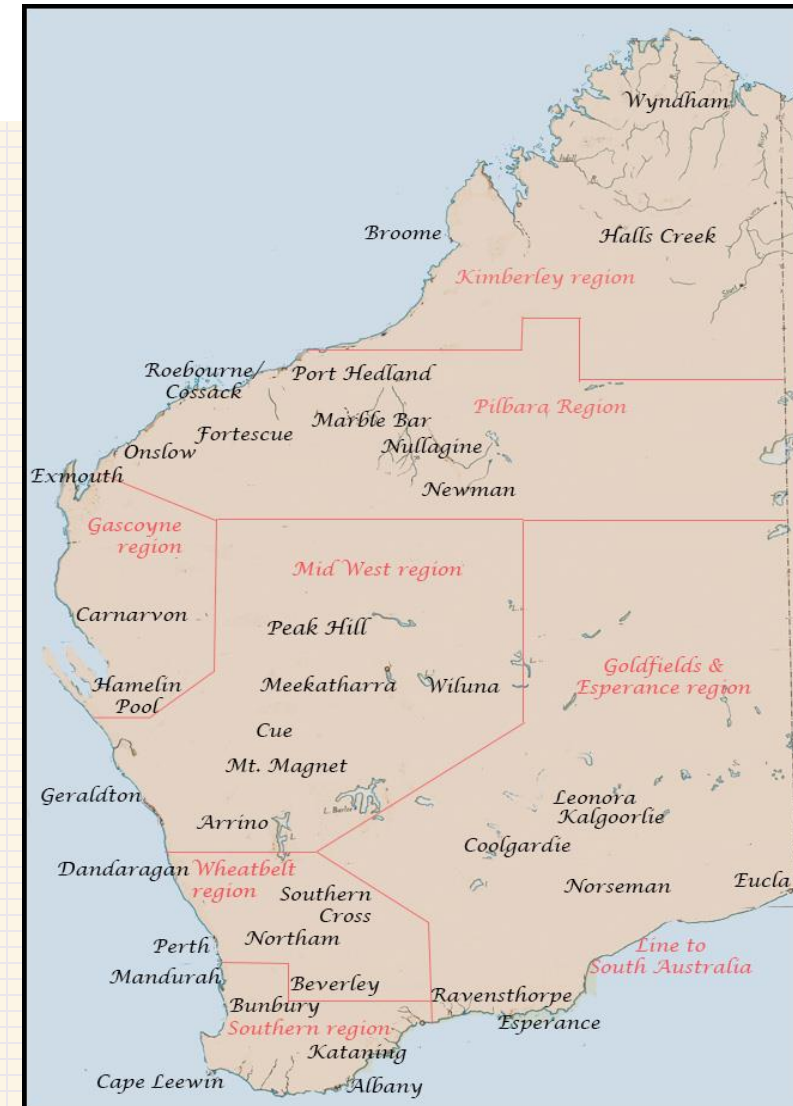


**“ RELIABILITY INTEGRITY DILIGENCE ”**

# Trade & Service Statewide Cover

Our ability to service our client needs and solve any problem is paramount. Our metropolitan and regional resources are forever evolving. Western Australia's regional and rural areas are vast and extensive, we have specialised trades, reliable and capable of completing any task. We engage with many technicians across multiple client portfolios which ensures a reliable sustained workforce. Our technicians prioritise all our work orders as we supply them with regular work.

Our regional network is so extensive we believe our network of trades and services that are locally based in the regions is unmatched by any other W.A. service provider



# System and Reporting

At Allcraft Projects we use Aroflow. A high performance cloud based service management and project management software tool. It provides us with capabilities to schedule and manage all tasks across to a quote where required then to an invoice. At any point we can report on all work orders and their status back to our client. It's reporting capabilities are extremely powerful enabling us to give live comprehensive updates on all job status. Our technicians have direct access in the field enabling them to update our systems live, as the job progresses through to its completion with photos and safety documentation being instantly uploaded to our system.

## ALLCRAFT PROJECTS

Cust ON	JN	Task	Type	Requested	Completed
1275743	21084	Nespresso Karrinyup Lock/Closer REpairs	Reactive General Maintenance	Fri, 27-Jan-23	Mon, 30-Jan-23
POFM146791	21090	Nespresso Karrinyup LED Lighting Repairs	Reactive General Maintenance	Mon, 30-Jan-23	Mon, 30-Jan-23
52560P41198691	21027	NAB Karratha Deep Clean and Vent Ladies Toilet	Reactive General Maintenance	Thu, 19-Jan-23	Tue, 31-Jan-23
117718161	21056	CLC Perth Soap Dispensers	Reactive General Maintenance	Mon, 23-Jan-23	Tue, 31-Jan-23
117736364	21095	Ventia Adelaide Terrace Light Fitting	Reactive General Maintenance	Tue, 31-Jan-23	Wed, 01-Feb-23
117729937	21083	Ventia Adelaide Terrace Drill Hole in Worktop	Reactive General Maintenance	Fri, 27-Jan-23	Wed, 01-Feb-23
117728774	21078	Ventia Adelaide Terrace Locker Handle Repair	Reactive General Maintenance	Fri, 27-Jan-23	Wed, 01-Feb-23
46727715	20695	Aviall Perth Jandakot Pot Holes Car Park	Reactive General Maintenance	Wed, 14-Dec-22	Wed, 01-Feb-23
232214	21087	Goodstart Somerville Remove non compliant toy boxes	Reactive General Maintenance	Fri, 27-Jan-23	Wed, 01-Feb-23
117701042	20947	Grand Cinema Bunbury Blown Lights	Reactive General Maintenance	Mon, 16-Jan-23	Wed, 01-Feb-23
117726009	21070	MAPS Madeley Hany Whiteboards	Reactive General Maintenance	Wed, 25-Jan-23	Wed, 01-Feb-23
117726365	21072	MAPS Forrestfield Stand/Sit Down DEsk	Reactive General Maintenance	Wed, 25-Jan-23	Wed, 01-Feb-23
52560P41199357	21046	NAB Bull Creek Floor Edge Cover	Reactive General Maintenance	Mon, 23-Jan-23	Thu, 02-Feb-23
117743059	21132	MAPS Madeley Entry Door Repairs	Reactive General Maintenance	Thu, 02-Feb-23	Thu, 02-Feb-23
9302	21137	OTR 155 Hale Road Forrestfield	Reactive General Maintenance	Thu, 02-Feb-23	Thu, 02-Feb-23
227254, 230560	20978	Goodstart Bertram Sand pit top up	Reactive General Maintenance	Tue, 17-Jan-23	Fri, 03-Feb-23
232118 / 233698	21144	Goodstart Cockburn Cockburn Central	Reactive General Maintenance	Thu, 02-Feb-23	Fri, 03-Feb-23
52560P41192889	20906	NAB Katanning Signage	Reactive General Maintenance	Thu, 12-Jan-23	Fri, 03-Feb-23
226371, 229334	20907	Goodstart Madora Bay Nappy Change Repair	Reactive General Maintenance	Thu, 12-Jan-23	Mon, 06-Feb-23
190121, 196210, 196717	19973	Goodstart Meadow Springs Asroturf Replacement	Reactive General Maintenance	Thu, 08-Sep-22	Mon, 06-Feb-23
182543, 195399	19792	Goodstart Meadow Springs Remove Mud Pit	Reactive General Maintenance	Thu, 18-Aug-22	Mon, 06-Feb-23
117751737	21166	MAPs Mandurah White board	Reactive General Maintenance	Mon, 06-Feb-23	Mon, 06-Feb-23
200386, 210346	20194	Goodstart Joondalup Boundary Fence	Reactive General Maintenance	Wed, 12-Oct-22	Mon, 06-Feb-23
227235, 229770	20957	Goodstart Albany Rusted Gutters	Reactive General Maintenance	Mon, 16-Jan-23	Mon, 06-Feb-23
227489	21006	Goodstart Eaton Pk Home Table unstable	Reactive General Maintenance	Wed, 18-Jan-23	Mon, 06-Feb-23
232266	21157	Goodstart Thornlie Thornlie carpark chain	Reactive General Maintenance	Fri, 03-Feb-23	Mon, 06-Feb-23

# Onsite & Service Capabilities

Allcraft internal staff, field staff & contractors are trained at onboarding and managing workflow through our own and in parallel, client specific work management systems. Whilst updating the work order from its inception, uploading photos, documents and notes through to task completion.

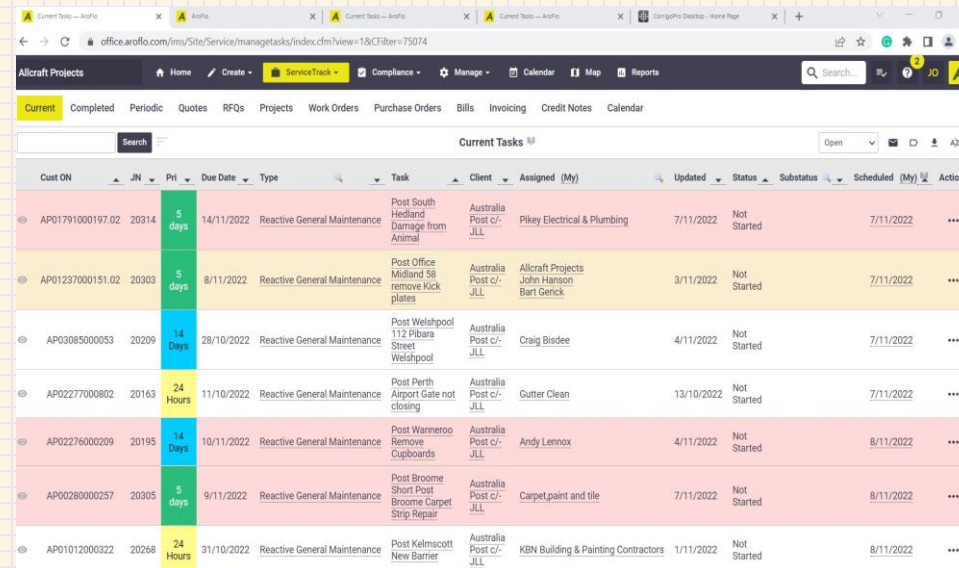
Our internal staff work together as a team scheduling daily follow ups including contacting all field technicians and clients to ensure all expectations are met.

During weekends and public holidays we have a 24 hour help desk through the rotation of “on call” qualified staff who can operate remotely in the field and/or in the office.

Part of our ongoing commitment to service our clients is offering tailor made scheduled maintenance visits to your sites if applicable.

All our clients have unique needs with certain items that are more important.

We can assist to create regular scheduled tasks to be met such as replacing light globes, servicing doors both automatic and manual, cash drawers, and whatever is required.



The screenshot displays the 'Allcraft Projects' software interface. The main section is titled 'Current Tasks' and contains a table with the following columns: Cust ON, JN, Pri, Due Date, Type, Task, Client, Assigned (My), Updated, Status, Substatus, Scheduled (My), and Actions. The table lists several tasks with their respective details.

Cust ON	JN	Pri	Due Date	Type	Task	Client	Assigned (My)	Updated	Status	Substatus	Scheduled (My)	Actions
AP01791000197.02	20314	5 days	14/11/2022	Reactive General Maintenance	Post South Hedland Damage from Animal	Australia Post c/- JLL	Pikey Electrical & Plumbing	7/11/2022	Not Started		7/11/2022	...
AP01237000151.02	20303	5 days	8/11/2022	Reactive General Maintenance	Post Office Midland 58 remove Kick plates	Australia Post c/- JLL	Allcraft Projects John Hanson Bart Genick	3/11/2022	Not Started		7/11/2022	...
AP03085000053	20209	1.4 Days	28/10/2022	Reactive General Maintenance	Post Welshpool 112 Pibara Street Welshpool	Australia Post c/- JLL	Craig Bisdée	4/11/2022	Not Started		7/11/2022	...
AP02277000802	20163	24 Hours	11/10/2022	Reactive General Maintenance	Post Perth Airport Gate not closing	Australia Post c/- JLL	Gutter Clean	13/10/2022	Not Started		7/11/2022	...
AP02276000209	20195	1.4 Days	10/11/2022	Reactive General Maintenance	Post Wanneroo Remove Cupboards	Australia Post c/- JLL	Andy Lennox	4/11/2022	Not Started		8/11/2022	...
AP00280000257	20305	5 days	9/11/2022	Reactive General Maintenance	Post Broome Short Post Broome Carpet Strip Repair	Australia Post c/- JLL	Carpet,paint and tile	7/11/2022	Not Started		8/11/2022	...
AP01012000322	20268	24 Hours	31/10/2022	Reactive General Maintenance	Post Kelmescott New Barrier	Australia Post c/- JLL	KBN Building & Painting Contractors	1/11/2022	Not Started		8/11/2022	...

### **Allcraft Projects Policy Book**

Our policy handbook “Occupational Health and Safety policy handbook” is comprehensive and covers all procedural, safety and environmental aspects of what we are guided by and how we operate.

This can be made available and furnished on request.

### **Reconciliation Action Plan (Policy)**

Allcraft Projects, acknowledges the Aboriginal people as the Traditional Owners and Custodians of Australia. Our intent is to lay the foundation for a unified and strong commitment to reconciliation across the organisation, that guides us in making a positive contribution to Australia’s reconciliation journey.

### **Modern Slavery Policy**

Allcraft Projects is committed to respecting and supporting the dignity, well-being and human rights of our employees and those who we engage with through our supply chain. We seek to utilise ethical suppliers and expect their support in the identification of modern slavery risks throughout our supply chain.

# Policies and Procedures

A L L C R A F T P R O J E C T S

H A S A L L R E L E V A N T S E C U R I T Y C L E A R A N C E S T O  
W O R K F O R O U R C O M M O N W E A L T H G O V E R N M E N T  
A N D A L L O U R M A J O R B A N K I N G A N D  
F I N A N C I A L I N S T I T U T I O N ' S C L I E N T E L E

# Summary

**Allcraft Projects** has dedicated over 30yrs to building our client relationships whilst maintaining a dedicated and loyal team of trades and services capable of meeting all requirements.

With our regional and metropolitan network of trades and services. Our own staff operating out of our Perth office. And our own joinery and cabinet shop below our offices. We can confidently meet all needs and solve all problems anywhere in WA

Allcraft Projects is currently working across many client portfolios extending into all types of building works

Allcraft Projects to capable of taking on more clients and ready to transition into new opportunities

Choosing Allcraft Projects, is choosing a stable reliable comprehensive and dedicated team that can provide solutions and meet all your needs





“The way to get started is to quit talking and begin doing”

Walt Disney

Please contact us at your earliest convenience if you require further information

PAUL HOBBS | PAUL@ALLCRAFTPROJECTS.COM.AU | MBL:0418 955 376  
WWW.ALLCRAFTPROJECTS.COM.AU